

CLINICAL RESEARCH: WHAT'S IT ALL ABOUT?

...a focused training for busy investigators and study teams

COURSE DIRECTORS & PRESENTERS - SHORT BIOGRAPHY

Inês Zimbarra Cabrita (Course Director)

Inês has a PhD in Cardiovascular Sciences at the National Heart and Lung Institute at Imperial College London. She has graduated at the Lisbon School of Health Technology, obtaining a BSc degree in Cardiopneumology (2001), after which she obtained a Masters in Medical Imaging Ultrasound (2006) and later completed a 2-years Master focused on Monitoring, Quality and Statistics at University of Ferrara, Italy (2016).

Inês is the Chief Operating Officer of the CRO AIDFM-CETERA, since 2013, and additionally has been Project Manager of several clinical trials, overseeing and managing a team of 8 people.

Since 2012, Inês also is the Scientific Coordinator of GAIC, a Cardiovascular Research Support Unit at Hospital Santa Maria, CHLN, where she is responsible for the coordination of all scientific activities and the management of more than 50 research projects, including phase II to IV trials and non-interventional studies.



Francisca Patuleia Figueiras (Course Director)

Francisca has a PhD in Biomedicine at Universitat Pompeu Fabra, Barcelona, Spain. She has graduated at Faculty of Science and Technology - New University of Lisbon where she obtained her Integrate Master's degree (MEng) in Biomedical Engineering (2007). Francisca worked as post-doctoral researcher at the Institute of Psychiatry, Clinics Hospital - University of São Paulo, Brazil. In 2016, she completed a 2-years Master focused on Monitoring, Quality and Statistics at University of Ferrara, Italy.

In 2013, Francisca was recruited by Association for Research and Development of the Faculty of Medicine (AIDFM) to integrate the scientific team of the Cardiovascular Research Support Department, where she started to act as scientific advisor and study coordinator of several national and international clinical trials and non-interventional studies in the cardiovascular field.

Still, in 2013, Francisca started collaborating in the pioneering project of an academic CRO, AIDFM-CETERA, as Scientific Affairs & Business Development Manager. Also, Francisca was Project Manager and Senior Clinical Research Associate of several clinical trials, being responsible for their implementation, management, and monitoring activities.

In January 2020, after the maternity leave of Francisca's third child, she started working as a home-based freelancer, keeping her collaboration with AIDFM-CETERA in the training programs.



Dulce Brito

Prof. Dulce Brito received her MD from Lisbon University Medical School in 1982. After obtaining her Doctoral degree (PhD.) in 2007, at the same Faculty, in the area of Cardiomyopathies, Dulce Brito was appointed to her current position as Invited Professor of Cardiology at Lisbon University Medical School.

Currently, Prof. Dulce Brito is cardiology consultant and researcher at the Cardiology Department at Santa Maria University Hospital (Cardiology Department), Head of the Cardiomyopathies Unit, and coordinator of the inpatient Cardiology Unit where several clinical trials and studies are conducted.

To the present, she has participated in over 17 international therapeutic investigational clinical trials, most as local PI (Principal Investigator) coordinating different teams and promoting Investigator driven research at the department. She is also a Senior Investigator at a H2020 Sponsored Clinical trial.

Dulce Brito has published over 90 scientific full papers, and over 130 conference proceedings (published abstracts), and has presented over 280 lectures/chairpersonships at national and international meetings.

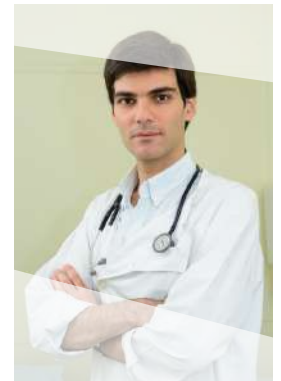


Pedro Carrilho Ferreira

Pedro has a MD from the Faculty of Medicine of the University of Lisbon, and currently works as Attending Cardiologist in Santa Maria University Hospital. During residency, he spent four months in the Interventional Cardiology Unit of the Academic Medical Center in Amsterdam, the Netherlands, and at the moment is completing the subspecialty in Interventional Cardiology. His main areas of interest are coronary artery disease and valvular heart disease.

He has teaching duties at the Faculty of Medicine of the University of Lisbon since 2005, and currently is Invited Assistant of Cardiology. He has supervised several Integrated Masters in Medicine, and collaborates in different optional disciplines and post-graduate courses. Between 2011 and 2012 he was also a teacher in the Master of Cardiovascular Diagnosis and Intervention of the Lisbon School of Health Technology and the Faculty of Medicine of the University of Lisbon.

Pedro has extensive experience in clinical research. He participated in more than 20 multicenter registries and clinical trials, as co-investigator, and designed and developed several investigator-initiated studies.



Catarina Sousa

Catarina has a MD from the Faculty of Medicine of the University of Lisbon, where she currently is an invited assistant. During her 5 years of training she spent 3 months at the Intensive Care Unit, at Saint Thomas' Hospital in London and 5 months at the Cardiothoracic Intensive Care Unit at Royal Brompton Hospital in London. Currently, Catarina is an Consultant Cardiologist at Centro Hospitalar do Barreiro-Montijo, E.P.E. Her background includes a long-standing experience in drug safety, having completed several courses on pharmacovigilance in the last years.

As Consultant Cardiologist, Catarina has also participated in several Phase III clinical trials, as Principal Investigator and Co-Investigator.

At CRO AIDFM-CETERA Catarina is the Medical Advisor, since 2014, providing clinical guidance to the team members, being responsible for the medical revision of clinical data and safety and efficacy events. Catarina also coordinates the Medical Writing & Translation Department.



Cristina Valente

Cristina has a PharmD at University of Lisbon. Also, she attended 3 years in Medicine at Nova University of Lisbon.

Currently Cristina is Patient Advocacy Group/Patient Support Program & Clinical Operations Manager at TAKEDA.

Before the end of 2018, Cristina was fully dedicated to clinical research activities for more than 11 years. During 6 years, Cristina was a Clinical Research Associate in the pharmaceutical industry where she was responsible for the monitoring of several phase IIa, IIb and III trials in psychiatry, neurology, oncology and in cardiovascular diseases. Later in 2013, Cristina was Clinical Operations Project Manager and CRO Manager at Servier where she was responsible for the management of several phase IIa, IIb and III trials in cardiovascular diseases, osteoarthritis, diabetic kidney disease and oncology. During the beginning of 2017, Cristina joined Roche as a Clinical Operations Country Study Manager and was responsible for the management and oversight of several oncology clinical studies, both interventional and non-interventional. In the same year, Cristina joined CRO AIDFM-CETERA team as member of the Scientific Advisory Board participating in the training programs and external advisory to the Quality System.



Cecília Gomes

Cecilia graduated in Dietetics from Lisbon School of Health Technology in 2001 beginning that same year her professional activity at the Santa Maria University Hospital - CHULN, EPE at the Dietetics and Nutrition Service (SDN), assuming, in 2010, Sub-coordination and Quality Management functions.

Later, in 2018 completes her MSc in Food Safety and Quality in Catering with her thesis on "Knowledge, attitudes and practices of hygiene and food safety. A case study: healthcare professionals of an University hospital" at Estoril's Hospitality and Tourism School (ESHTE).

Cecilia has certification in Good Clinical Practice and holds a postgraduate degree in "Monitoring in Clinical Trials", from Universidade Lusófona. Since March 2019 she integrates the team of Cardiovascular Research Support Department (GAIC) as GAIC Chief Coordinator and at the same time assumes the coordination of several Clinical Studies and Clinical Trials.

Since 2019 she has also been a Guest Assistant Professor, in the degree in Nutrition Sciences, at the Faculdade de Medicina da Universidade de Lisboa.



Susana Silva

Susana obtained her BSc. in Biomedical Engineering in the Polytechnic Institute of Bragança (IPB) in 2013. In the same year, she made a summer course in Germany about "Designing Devices for Healthy Ageing - An International Challenge", and initiated the Master's degree (MSc) in Biomedical Technology also in IPB. In 2015 she finished the MSc with her thesis on "Gaseous embolism in microchannels and Flow Focusing Technique in the Production of Microparticles PDMS" with partnership with the University of Extremadura in Badajoz, Spain.

Since 2016, Susana is working at the Cardiovascular Research Support Department (GAIC) being Study Coordination her main activity.

